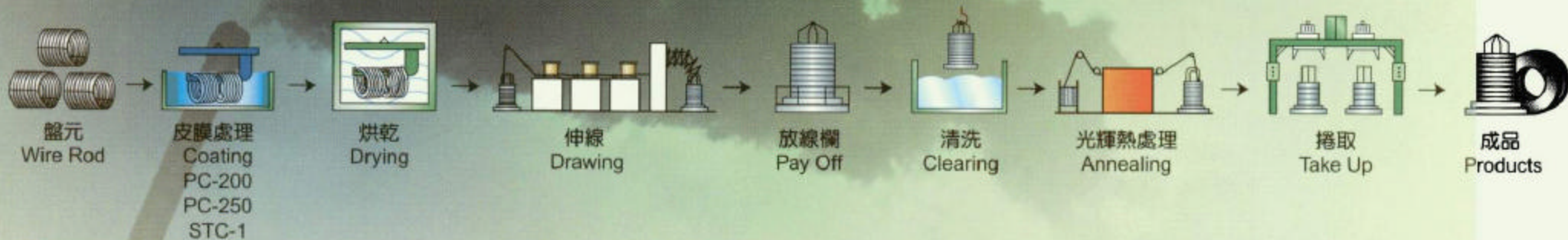
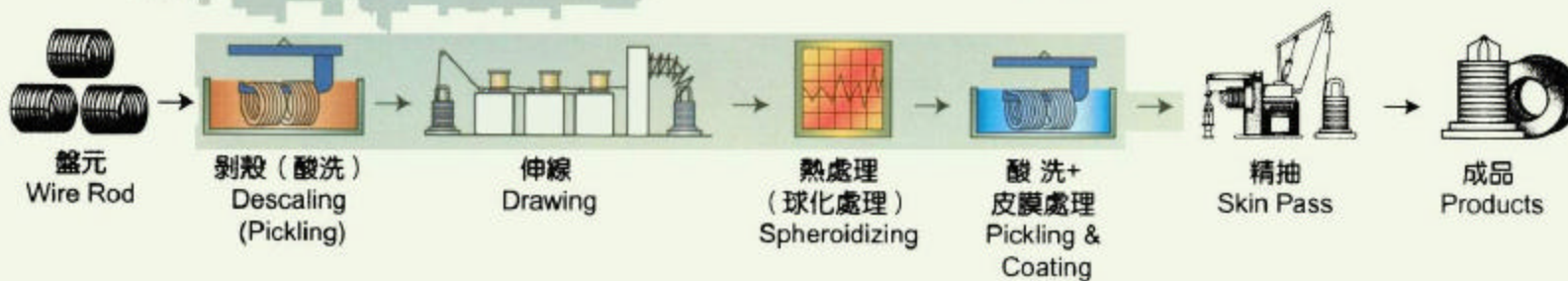


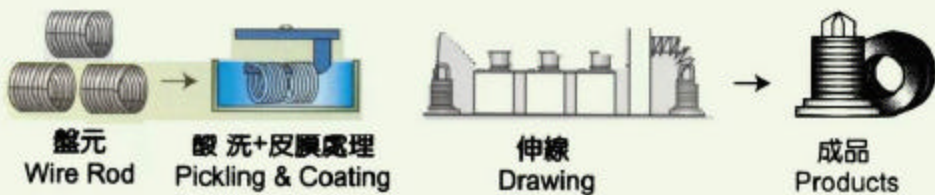
1 不銹鋼線生產流程 Stainless steel wire manufacturing layout

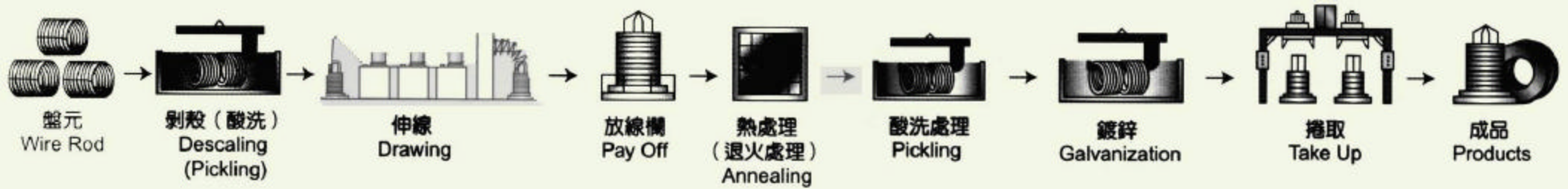


2 螺絲線生產流程 Screw wire A1S1 1018-1022 manufacturing layout



3 一般螺絲線生產流程：General screw wire manufacturing layout

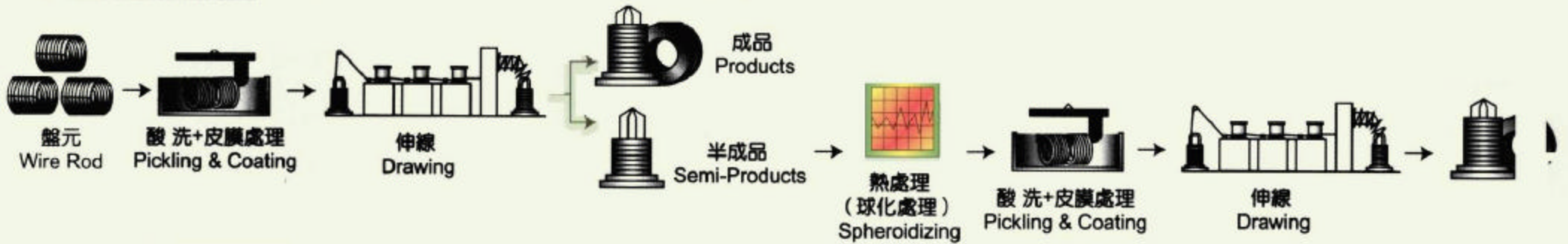




5 Wire mesh 線生產流程 : Wire mesh manufacturing layout



6 碳鋼線生產流程 High carbon steel wire manufacturing layout



7 鋼釘製造生產流程 High carbon nail manufacturing layout





FEATURES

Model : YTD-600SG5/(N)+ABCD-600G 或 ABCD-600B
YTD-600SG3/(N)+ASD-600B
YTD-400SG2/(N)+ABCD-400B 或 ASD-400B

The Continuous Wire Drawing Machine is a multi drum, multi-die wire drawing machine which is equipped with wire drawing and coiling function. The drum is casted with friction resistant material. The surface is ground by spot welding and internal side treated by compulsory water cooling device. The die box is equipped with pressure die for better lubrication and equipped with water cooling device. The gears in the transmission gear box are made of alloy material, finished with heat treatment and grinding in achieving high speed operation with lower noise and high efficiency. The drum speed is controlled by inverter for carrying out non-section speed shift and thus, applicable for drawing steel wires, stainless steel wires, and aluminum - copper wires, etc.



STRAIGHT LINE CONTINUOUS WIRE DRAWING MACHINE

SCWD-600x8B



- Optional Devices :**
1. Rotary die device.
 2. Wire diameter measuring device.
 3. Constant Measuring Device.
 4. Type of wire collection: collet type, or spooler type.
 5. Japanese or European servo controller, servomotor.

Applicable wire collection systems

NSC-600D



SPC-1000



Model	Inlet wire dia (mm)	Drum diam (mm)	Speed(M/min)	Motor HP
SCWD-900	13.0 ~ 10.0	900	0 ~ 450	100 ~ 150
SCWD-760	10.0 ~ 8.0	760	0 ~ 600	75 ~ 100
SCWD-600	7.0 ~ 5.5	600	0 ~ 1000	50 ~ 75
SCWD-400	4.5 ~ 3.0	400	0 ~ 1200	30 ~ 50

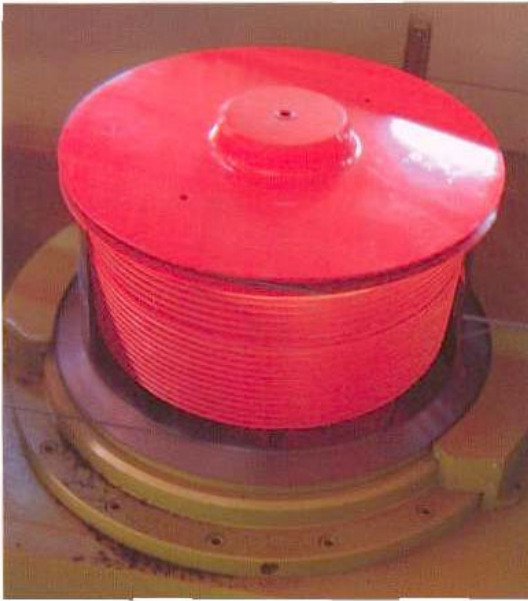
The specifications subject to change without previously notice.

Cooling System : for Wire Drawing Drum

1. The interior water-cooling system adopts a design of high efficiency circulation, and spiral, fully filled water paths. Water adheres to inner surfaces of the drawing drum while the large adhesion area can bring the heat out of the drawing drum quickly. Meanwhile, the feeding and exhausting of water are not affected by the centrifugal force of the high-speed running drawing drum.
2. There is an exterior air-cooling system. Each drawing drum has its independent air-cooling blower (with adjustable airflow). Cool air comes evenly and directly around the drawing drum to cool down wires.

Material of the Wire Drawing Drum

1. It is made of nodular graphite cast iron.
2. It is fabricated after annealed (to eliminate the stress)
3. The wire drawing zone is sprayed with tungsten carbide and grinded to a hardness of HRC70.



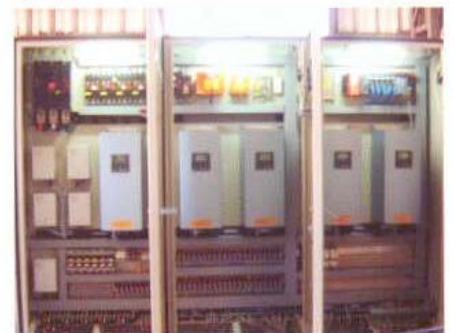
Unique tension sheaves and guide roller:

1. Wires go through the speed adjustable tension sheaves then pass through guide roller above the drawing drum.
2. This allows wires to steadily entering into the next die (without shaking).

Constant Measuring Device :

(Installed at the finished wires outlet of the wire collection device)

1. This device is designed for the convenience of producing a constant weight for each bundle of wires.
2. When the finished wires that are brought down reach a predetermined length (can be converted to an equivalence of weight), the air pressure detecting pins above the wire collecting drum will insert into the wires as separators. Simply take off the finished wires at the outer of the pins to get a bundle of wires of an equal weight.



Servo-control system

Static Coiler

NSC-600



- 自動收線機是裝置在伸線機之尾端，可使伸線工作連續不斷的進行，並增加生產量。
- 自動收線機之線胴為不轉式，可輕易的經由轉盤上連續取下完成之線材。
- 自動收線機分有模式與無模式兩種規格。
- 有模式自動收線機之眼模及線胴均有水冷卻裝置（循環式）
- Non-stop coiler is used behind the wire drawing machine for continuous, uninterrupted production and increasing the productivity.
- Non-stop coiler with non-rotating drum enable the finished wire to be taken out continuously.
- Non-stop coiler are available with and without skin-pass drawing facility.
- The drawing facility Non-shop coiler's die and drum have water cooling system(cycle type)



NSC-600D

機型 Model	成品線徑(mm) Dia of Finished Wire		線胴直徑mm Dia of drum	馬達HP Motor	機械重量kg Machine weight
	高碳線high carbon	低碳線Low carbon			
NSC-915	6.5-3.5	8.0-4.0	915	30-40	4260
NSC-760	5.0-2.7	6.5-3.5	760	25-30	2600
NSC-600	4.2-1.5	5.5-1.6	600	15-20	2100
NSC-600D	4.0-1.4	5.0-1.5	600	40-60	4000
NSC-400	3.2-0.9	3.7-1.0	400	10-15	1200
NSC-400D	3.0-0.8	3.2-0.9	400	20-40	2600
NSC-310	2.1-0.6	2.4-0.7	310	5-10	1000